

Smith Equipment

Experts in Earthmoving Parts, Components,
Attachments and Equipment.



Welcome to Smith Equipment

GP Smith Equipment – Our History & Experience

- Established in 1984, we are a wholly Independent and family owned business;
- Over 40 years experience supplying high-quality new and used earthmoving equipment, parts, components and attachments to the civil, mining and construction industries;
- Over 40 years experience dealing, repairing and renting Caterpillar machinery;
- National and international customer base and reach;
- Long-standing relationships with End-User Component Rebuilders, Owners and Operators;
- We are one of Australia's largest equipment dismantlers of earthmoving equipment;
- Specialists in component rebuilds as well as reconditioned and exchange parts;
- Experts in machine sales, rentals, dry-hire and rent-to-purchase equipment;
- Extensive experience in the global importation of low-hour machinery.

GP Smith Equipment – Our Business

Machine Dismantling
& Parting Out

Machine Sales & Rentals

Component Rebuilds
& Reconditioning

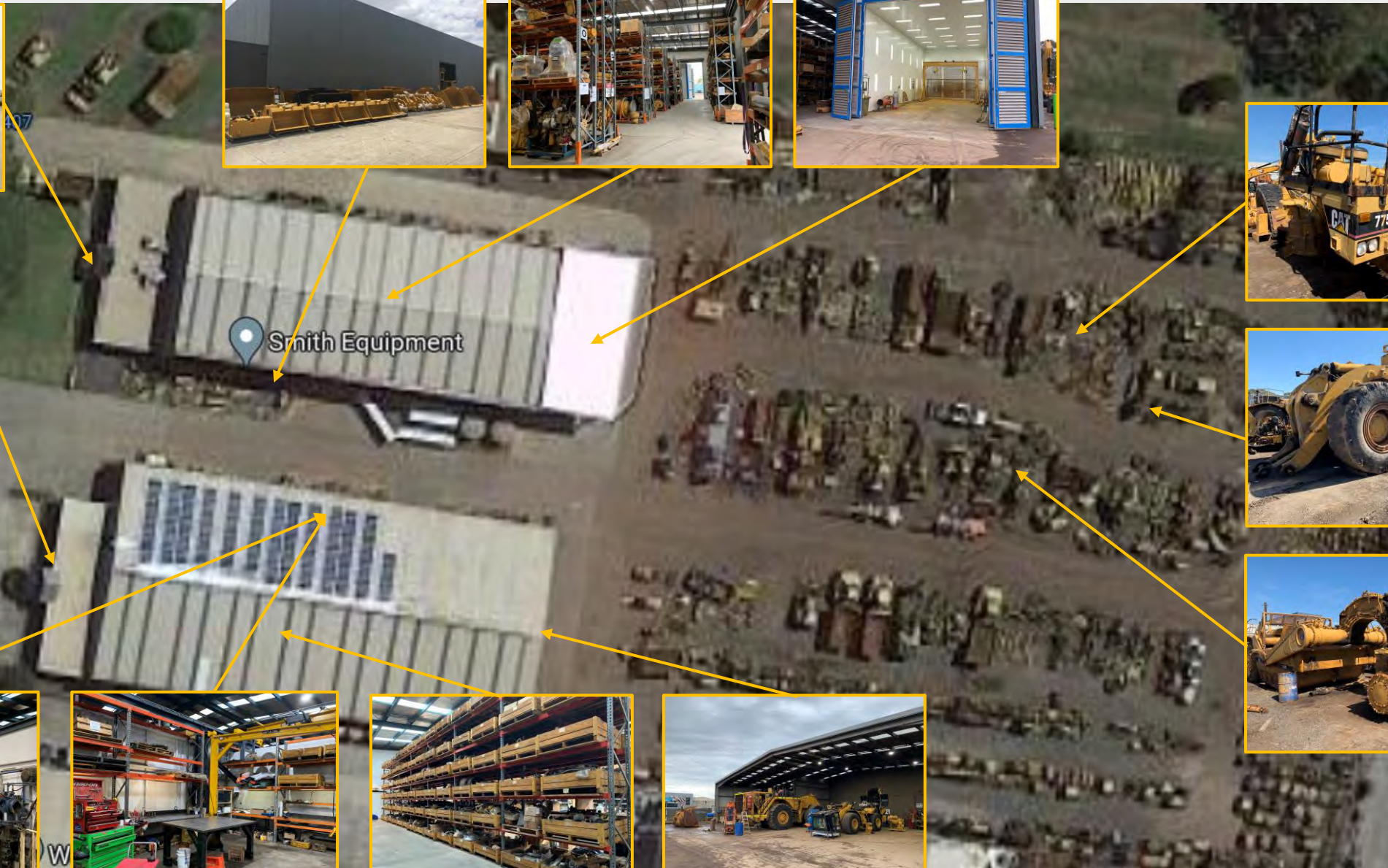


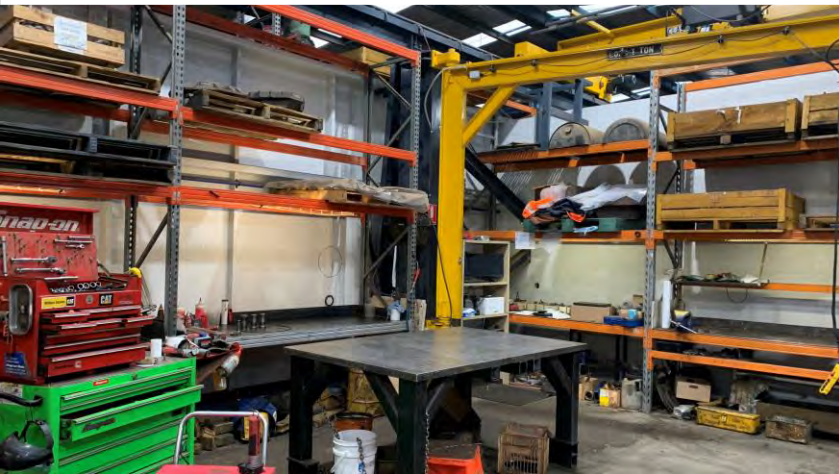
New Surplus Parts

Used Parts & Vintage Parts

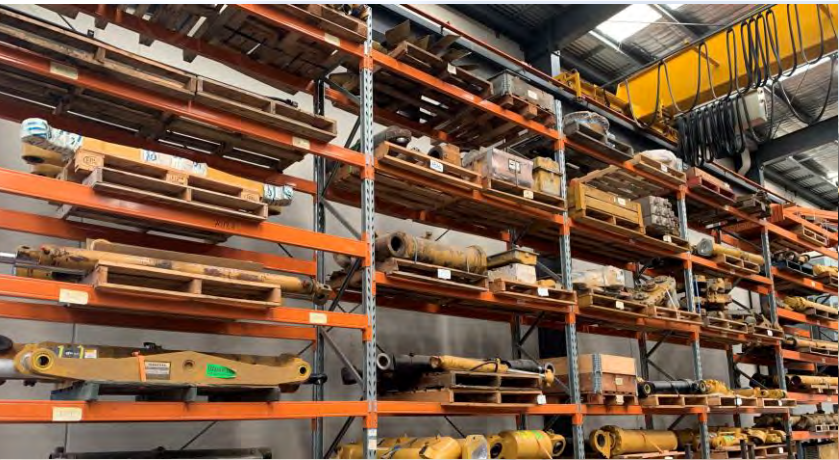
New Replacement Parts

GP Smith Equipment – Our Melbourne Facility





GP Smith Equipment – Our Melbourne Facility (In-House Workshops & Dismantling/Reconditioning Facilities)



GP Smith Equipment – Our Melbourne Facility (Warehouse & Logistics Facilities)

GP Smith Equipment – Reconditioning & Exchange Components / Parts Program

*'We are your one-stop shop for earthmoving
parts, components and attachments.'*



GP Smith Equipment – Reconditioning & Exchange Components / Parts Program

*'We are your one-stop shop for earthmoving
parts, components and attachments.'*



GP Smith Equipment – Mechanical Face Seals Program (Floating Seals / Duo Cones)

- Smith Equipment is the Exclusive Australian & New Zealand MFS Distributor.
- Smith Equipment has Specialist MFS Sales Knowledge & Support.
- Smith Equipment Carries a Large Range of Part Numbers & Sizes.
- SAP Manufactures Cast Iron (Ni-Hard) Face Seals.
- OEM Quality Manufacturing to the Highest Standards.
- 12+ Meters Per Second Capability.
- SAP Provides Cast Iron & Toric (O-Ring) Manufacturing in One Facility.
- On-Going Sales Support & Service.

The logo for SAP Parts features the letters 'SAP' in a large, bold, blue font. A white swoosh underline is positioned beneath the 'S' and 'A'. To the right of this swoosh, the word 'Parts' is written in a smaller, blue, sans-serif font. A small circular icon containing a stylized gear or seal is placed between the 'SAP' and 'Parts' text.

SAP Parts

The logo for Smith Equipment consists of the word 'SMITH' in a bold, black, sans-serif font. A yellow triangle is positioned above the 'I' and 'T'. Below 'SMITH', the word 'EQUIPMENT' is written in a smaller, black, sans-serif font.

SMITH
EQUIPMENT

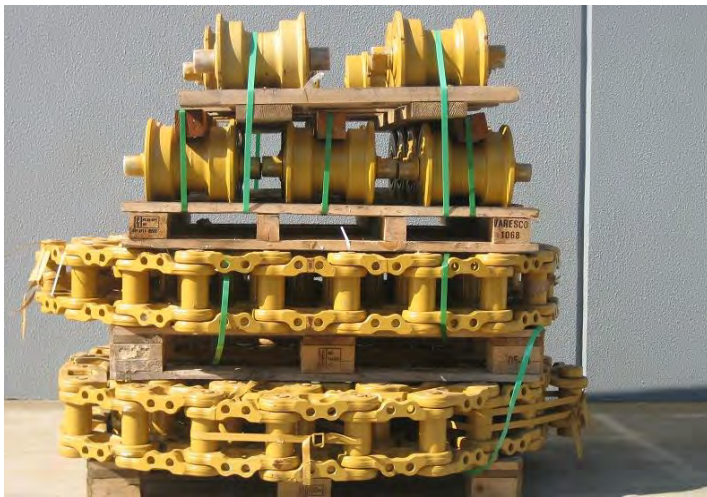


GP Smith Equipment – Parts & Components

*'We are your one-stop shop for earthmoving
parts, components and attachments.'*



Tilt, Lift, Shift, Stick & Bucket Cylinders Available



GP Smith Equipment – Parts & Components

*'We are your one-stop shop for earthmoving
parts, components and attachments.'*



GP Smith Equipment – Dismantling/Parting Out Program (Above & Underground Applications)

'We pride ourselves on our ability to procure machines, parts and components from international and domestic sources for market re-utilisation.'



GP Smith Equipment – Equipment Sales & Rentals Program (Low-Hour Machines)

*‘We are experts in machine sales, rentals, dry-hire
as well as rent-to-purchase equipment. We have
extensive experience in the global importation
of low-hour machinery.’*



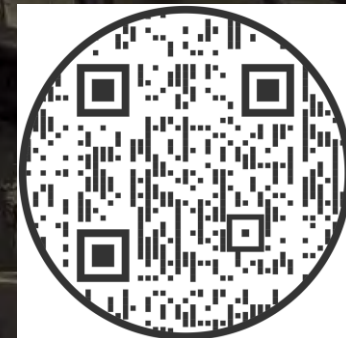
GP Smith Equipment – Domestic Distribution Network



GP Smith Equipment – International Distribution Network



Smith Equipment – Experts in Earthmoving Parts,
Components, Attachments and Equipment.



Contact Details:

T: +61 3 9793 1588

F: +61 3 9791 4386

E: mail@smithequipment.com.au

W: www.smithequipment.com.au

Scan the QR Code to Add Our Details to your
Phone Directly – Or Click on the Link Below:

linko.page/risgoexl32f9